

# NOTICE OF TIMBER HARVESTING SAFETY ZONE

Section 77C, Sustainable Forests (Timber) Act 2004 ('the Act')

The area shown on the map below bounded by the striped orange border is a **timber harvesting safety zone** within the meaning of section 77B of the Act.

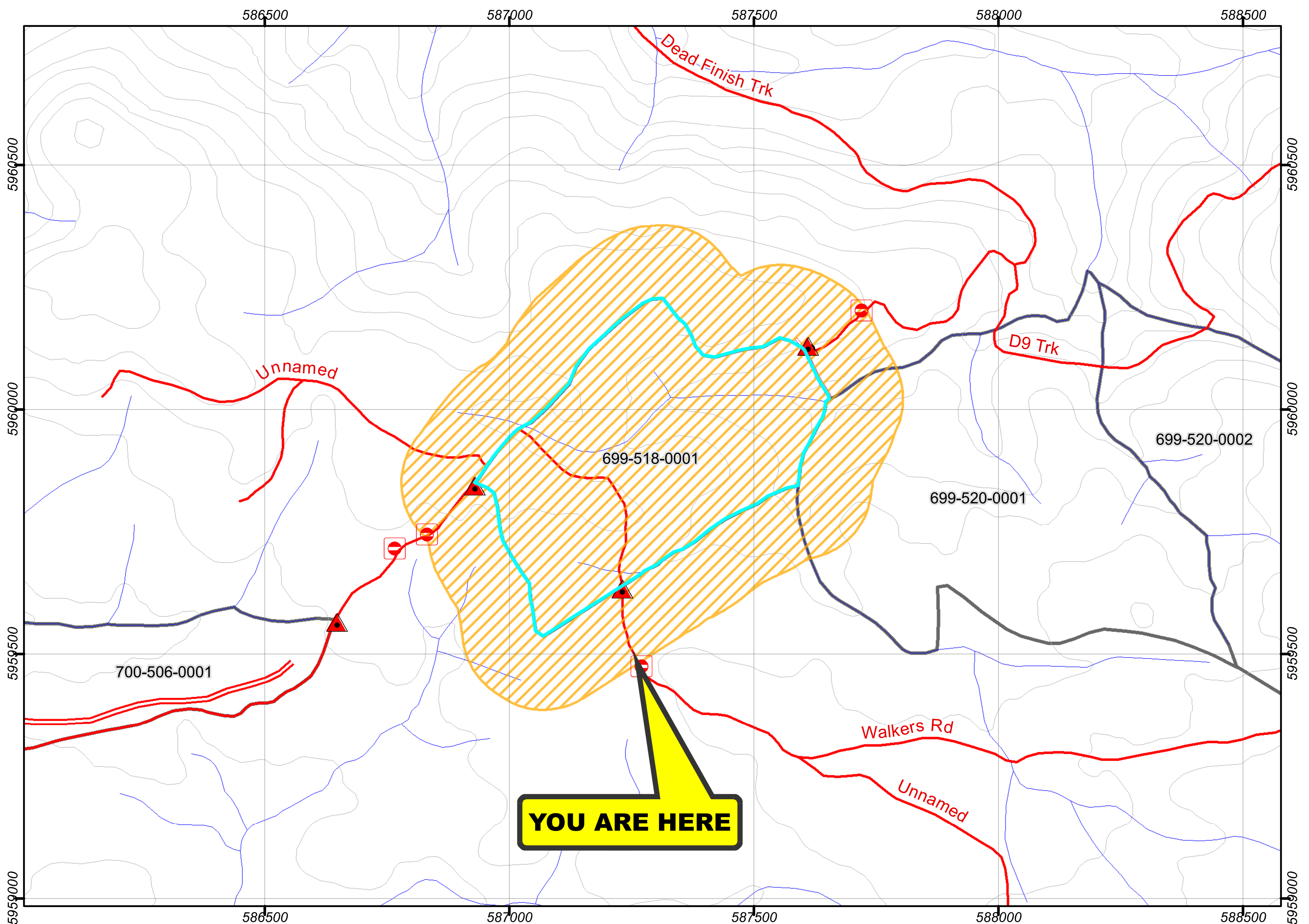
<p>The <b>timber harvesting safety zone</b> is comprised of all of the following:</p> <ul style="list-style-type: none"> <li>Coupe(s) <b>699-518-0001</b></li> <li>State forest within 150 metres from the boundary of the above coupe(s)</li> <li>Any road that is closed</li> </ul>	<p><b>Commencement</b></p> <p>Timber harvesting operations in the <b>timber harvesting safety zone</b> specified in this Notice commence on:</p> <p><b>24/04/2020</b></p>
---	---

## Offences and penalties

Offences and penalties apply in the **timber harvesting safety zone** specified in this Notice.

Offences include:

- To enter or remain in the timber harvesting safety zone
- To be in possession of a prohibited thing in a timber harvesting safety zone
- To allow a dog to enter a timber harvesting safety zone,
- To remove or destroy a barrier or fence,
- To remove or destroy a notice.



<p><b>Base Features</b></p> <ul style="list-style-type: none"> <li>Roads</li> <li>Watercourse</li> <li>Contours</li> <li>Private Property</li> </ul>	<p><b>Tracks</b></p> <ul style="list-style-type: none"> <li>Actual Coupe Access</li> <li>Boundary Trail</li> <li>Existing Side-Cut</li> <li>Other</li> <li>Snig Tracks</li> <li>Traffic Mgmt Guide</li> </ul>	<p><b>Coupe Boundaries</b></p> <ul style="list-style-type: none"> <li>Approved TRP Coupe</li> <li>Approved TRP Driveways</li> <li>VF Reserves</li> <li>Timber Harvesting Safety Zones</li> </ul>	<p><b>Traffic Management</b></p> <ul style="list-style-type: none"> <li>Signage</li> <li>Stop/Go Control Point</li> <li>Barrier/Gate</li> <li>Other</li> </ul>	<p>Map Scale 1:10,000</p> <p>0 250 500 Metres</p> <p>Projection: MGA55</p>
--	---	--	--	--

This publication is made available for information purposes only. While VicForests endeavours to ensure the most accurate information is available, VicForests makes no claims or guarantees as to its accuracy, completeness or adequacy. VicForests expressly disclaims all liability for any error, loss or other consequence arising from any use of this publication. Information identified as modelled features will require field confirmation. Species detections are subject to updating.