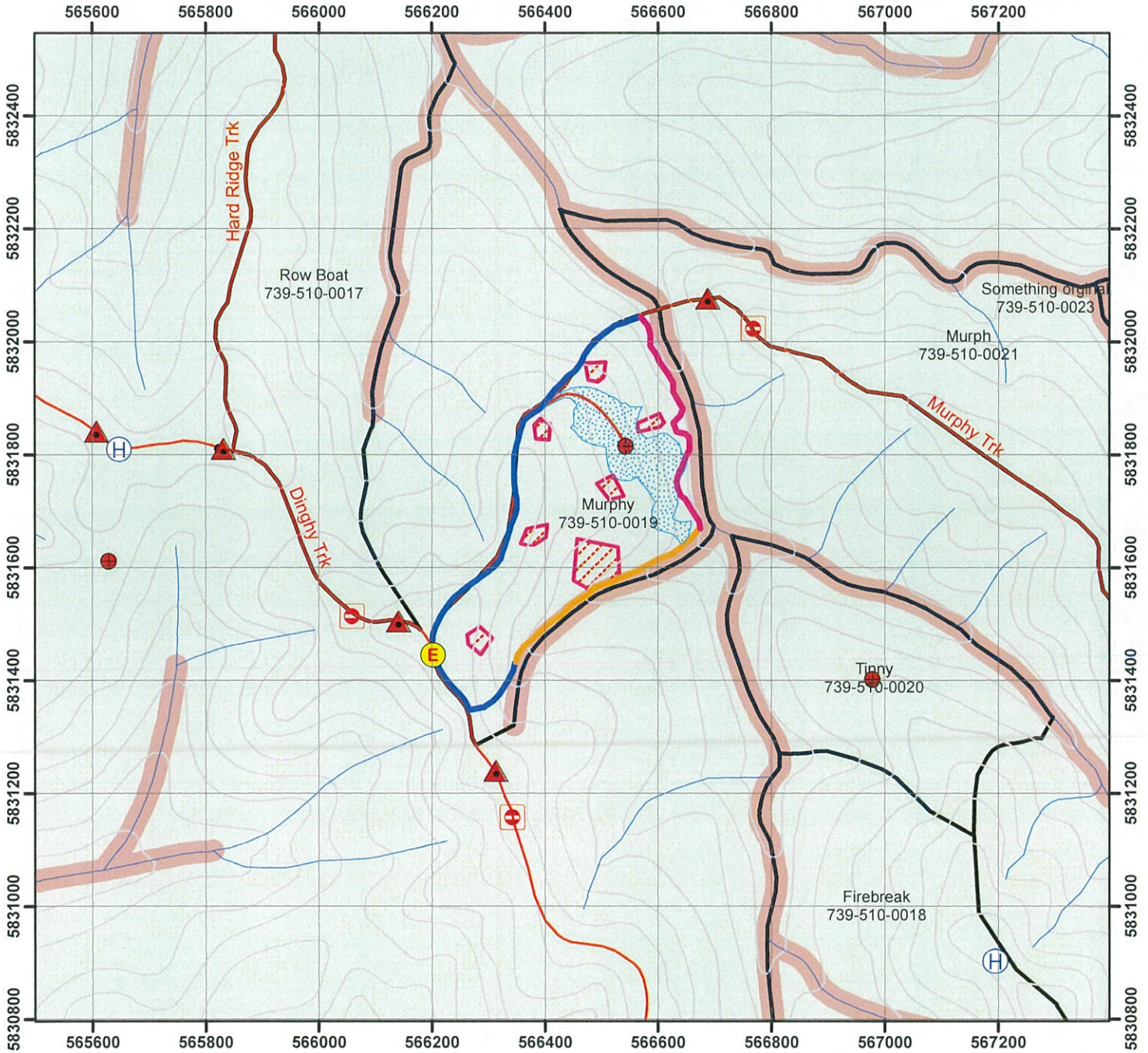


# Operations Map

FMA:	TB	District:	Bairnsdale	Gross area ha:	17.39
Coupe Address:	739-510-0019	Easting/Northing:	566463 5831696	Est nett area ha:	15.20
Coupe Name:	Murphy	Lat/Long:	37d 39m 34s S 147d 45m 13s E	Silvic Intent:	ADS



<b>Forest Management Zones</b> <ul style="list-style-type: none"> <li>General Management Zone</li> <li>Special Management Zone</li> <li>Special Protection Zone</li> <li>Code of Forest Practice</li> <li>Other Public Land</li> <li>Conservation Parks and Reserves</li> <li>Other Parks and Reserves</li> <li>OPR - Limited Timber Harvesting</li> <li>Plantations</li> <li>Commonwealth Land</li> </ul>	<b>Coupe Boundaries</b> <ul style="list-style-type: none"> <li>Approved TRP Coupe</li> <li>Approved TRP Driveway</li> <li>Harvest Unit/Roadwork Unit</li> <li>Marked Nett Area (if different to Harv/RW Unit)</li> </ul>	<b>Actual Features</b> <ul style="list-style-type: none"> <li>Stream Crossing</li> <li>Actual Landing Location</li> <li>Actual Exclusion Area (includes retained habitat)</li> <li>Hazards Layer</li> <li>Hazardous Tree</li> </ul>	<b>Additional Features</b> <ul style="list-style-type: none"> <li>Water Point</li> <li>Helipad</li> <li>Emergency Evacuation Point</li> <li>Other</li> </ul>	<b>Map Scale</b> 1:10,000  <b>Map Projection:</b> MGA55  <b>Map Date:</b> 17/07/2020 <b>Map Template:</b> 02-02 -- 15-01-2014 <b>Produced By:</b>
<b>VicForests Allocation 2019</b> <ul style="list-style-type: none"> <li>Ash</li> <li>Mixed Species</li> <li>Unallocated</li> </ul>	<b>Traffic Management</b> <ul style="list-style-type: none"> <li>Signage</li> <li>Stop/Go Control Point</li> <li>Barrier/Gate</li> <li>Other</li> </ul>	<b>TRACKS</b> <ul style="list-style-type: none"> <li>Actual Coupe Access</li> <li>Snig Tracks</li> <li>Existing Side-Cut</li> <li>Boundary Trail</li> <li>Other</li> <li>Other</li> </ul>	<b>Planned Features</b> <ul style="list-style-type: none"> <li>Proposed Landing Site</li> <li>Proposed Exclusion Area</li> </ul>	
		<b>MARKING</b> <ul style="list-style-type: none"> <li>Buffer</li> <li>Filter</li> <li>General</li> </ul>		

This publication is made available for information purposes only. While VicForests endeavours to ensure the most accurate information is available, VicForests makes no claims or guarantees as to its accuracy, completeness or adequacy. VicForests expressly disclaims all liability for any error, loss or other consequence arising from any use of this publication. Information identified as modelled features will require field confirmation. Species detections are subject to updating.