


Interactive Map Guide

Welcome to VicForests' Interactive Map.

The main screen view for the interactive map is VicForests entire area of operation. To view the full map, click the 'home' button -  .

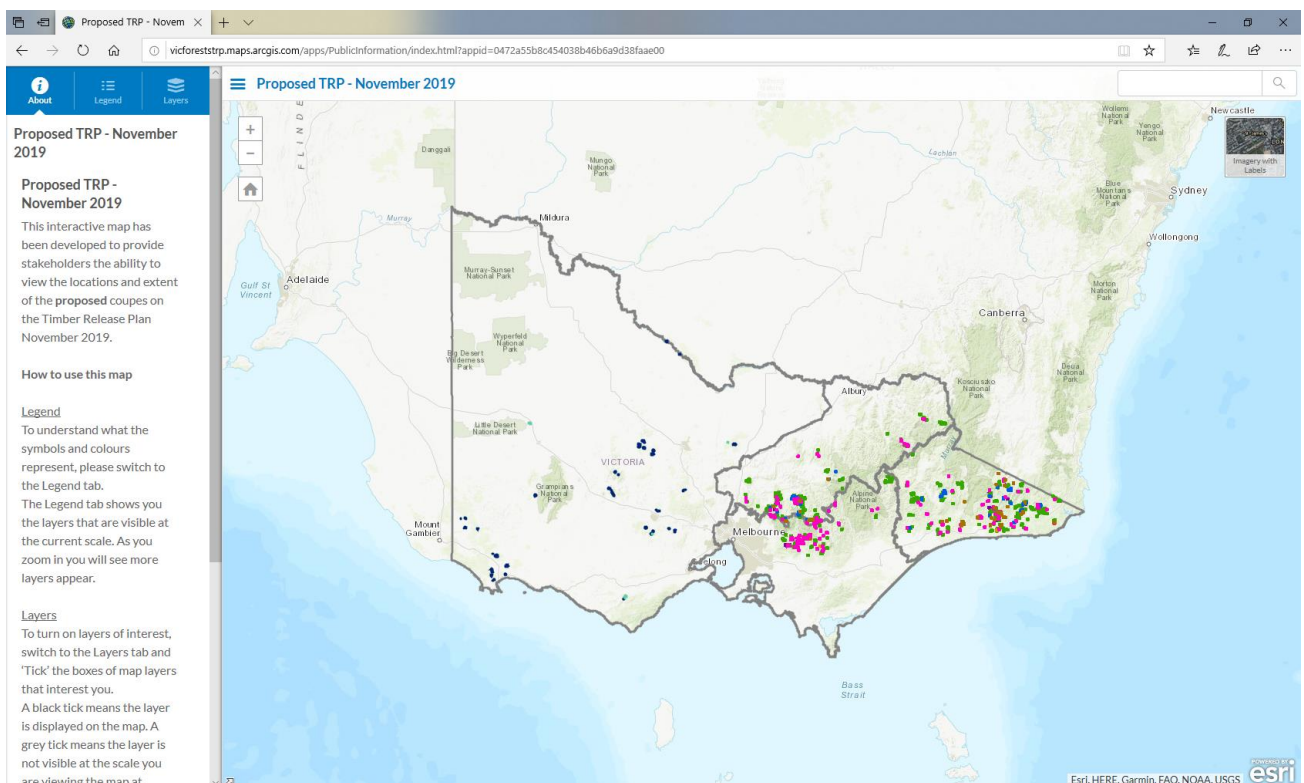


Figure 1 – Overview

There are two ways to navigate the map:

1. Use your scroll button to zoom in and out of areas. Click and drag to move around.
2. If you are looking for a specific coupe or area, use the search button located on the top right-hand side of the screen.

Searches on the interactive map are conducted by area or address.

Note: ensure you specify VIC as the state.



Colour Guide	
Green polygon	Proposed new TRP coupes
Blue polygon	Proposed Amended TRP Coupes
Orange polygon	Proposed Silvicultural Change
Pink polygon	Regenerated TRP coupes
Brown polygon	Removed unharvested TRP coupes
Purple polygon	TRP coupe driveways
Aqua polygon	Proposed Amended TUP Coupes
Dark Blue polygon	Proposed new TUP coupes
Light orange polygon	Proposed Silvicultural TUP Change

Simply click on a polygon for additional coupe information.

The layers function on the left enables the user to switch map features on and off.

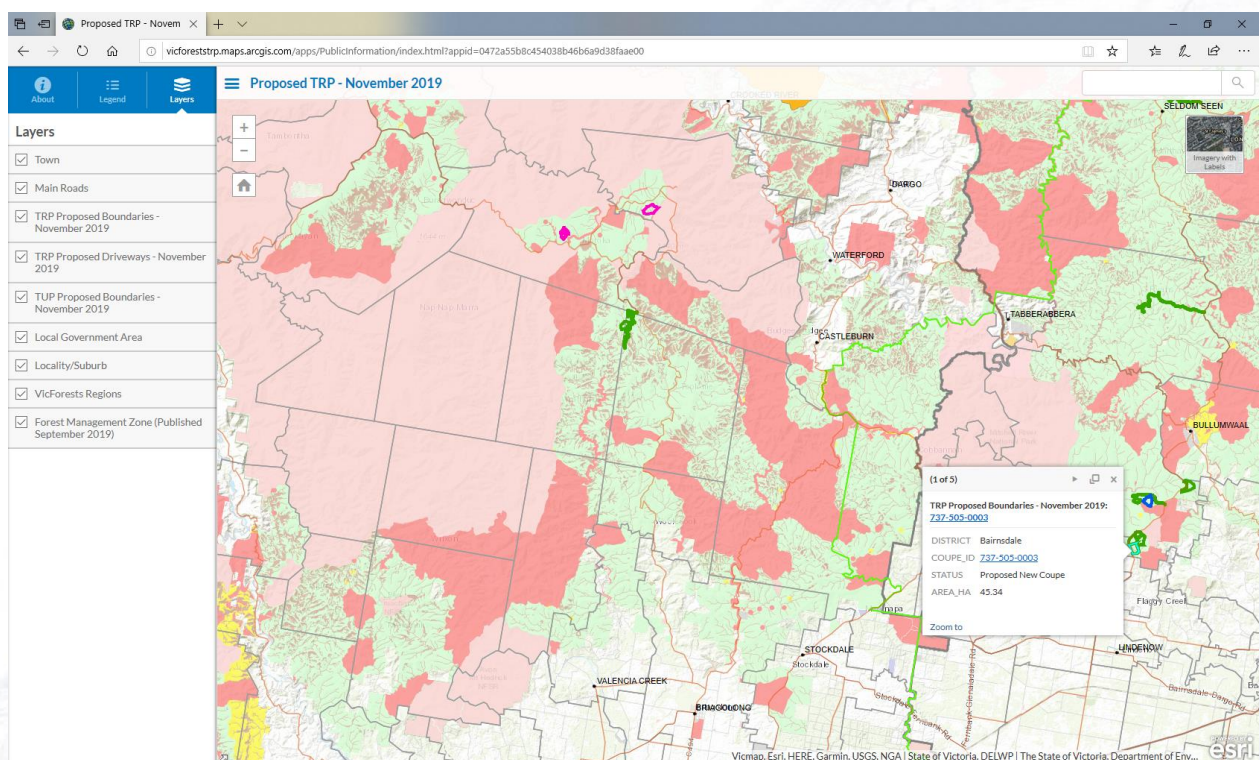


Figure 2 – Coupe locations and information

For further assistance with navigating the interactive map email vfs.trp@vicforests.com.au