


Interactive Map Guide

Welcome to VicForests' Interactive Map.

The main screen view for the interactive map is the entire VicForests area of operation. To view the full extent of the map, click the 'home' button below - 

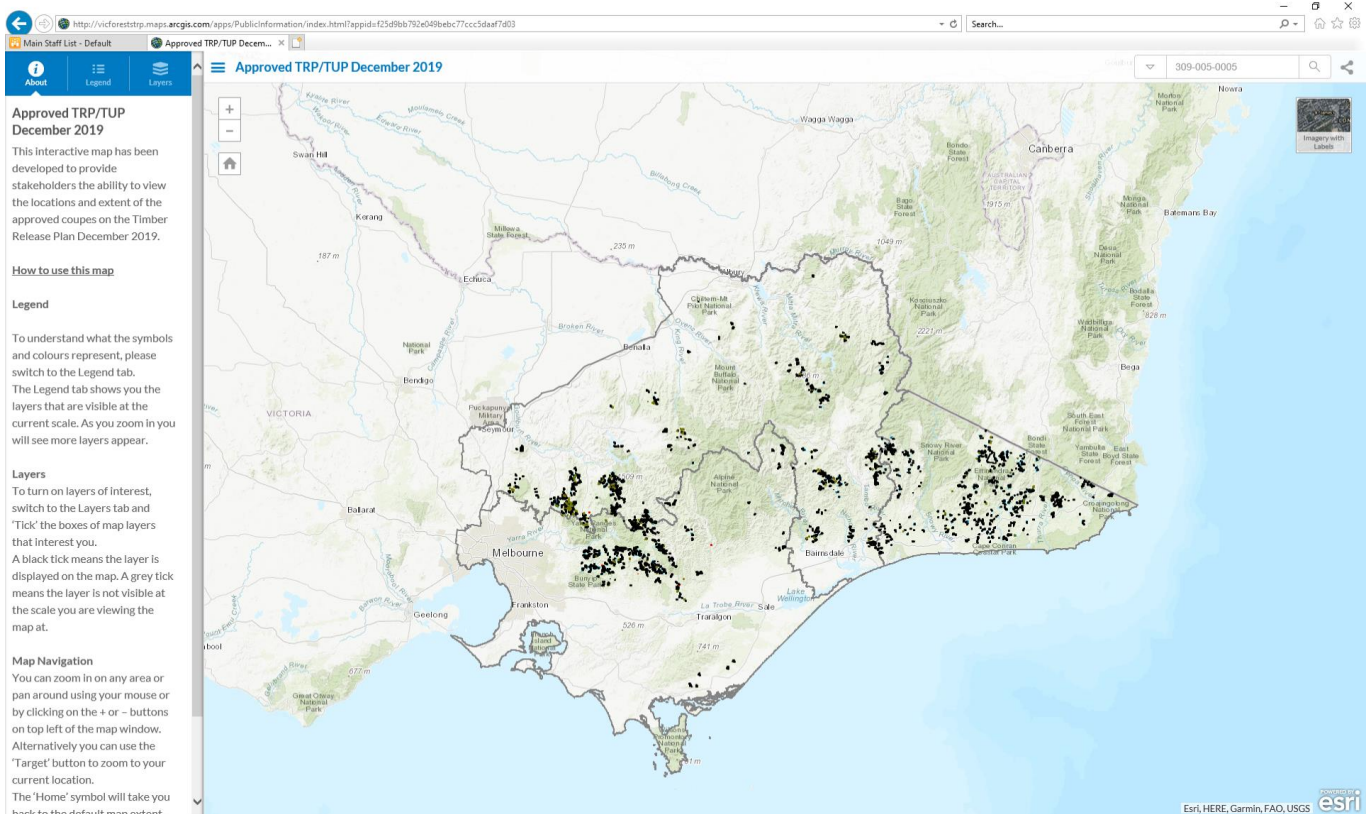


Figure 1 – Overview

There are two ways to navigate the map:

1. Use your scroll button to zoom in and out of areas, and click and drag to move around – as per Google maps.
2. If you know of a specific coupe or area, use the search button located on the top right hand side of the screen.



Searches on the interactive map are conducted by area or address. *Note please ensure you specify VIC as the state.*

Colour Guide	
Black polygon	Approved TRP/TUP coupes
Blue polygon	TRP coupe driveways
Tan polygon	TRP Roadlines
Pale Pink polygon	TRP Regenerating Roadlines
Green polygon	TUP Operations
Olive polygon	Currently regenerating TRP coupes
Red polygon	Log Storage Facility

Simply click **once** on a polygon for coupe information, as seen below.

The layers function on the left side enables the user to switch on and off highlighted map features.

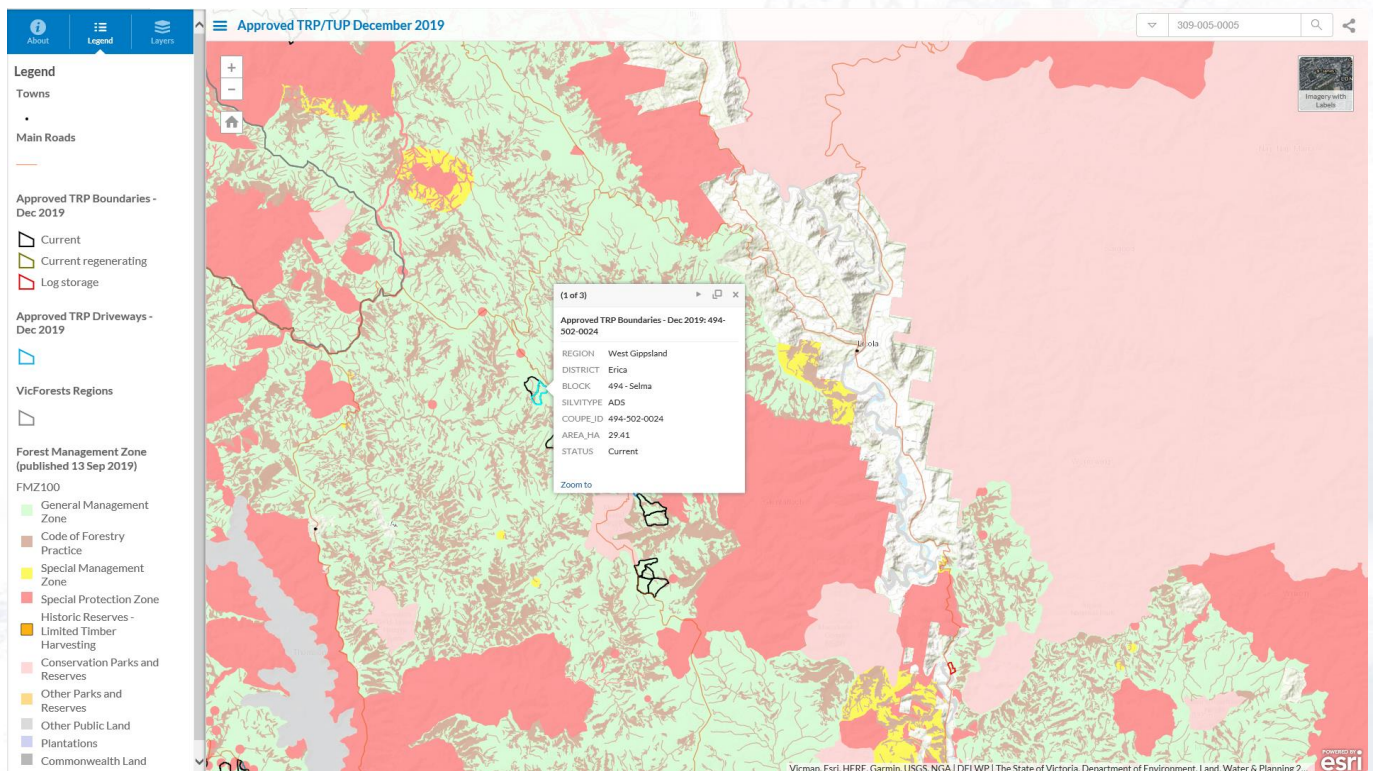


Figure 2 – Coupe locations and information

For further assistance with navigating the interactive map please email:
vfs.trp@vicforests.com.au